

Installation of Square Lug Snaploc Guide Post

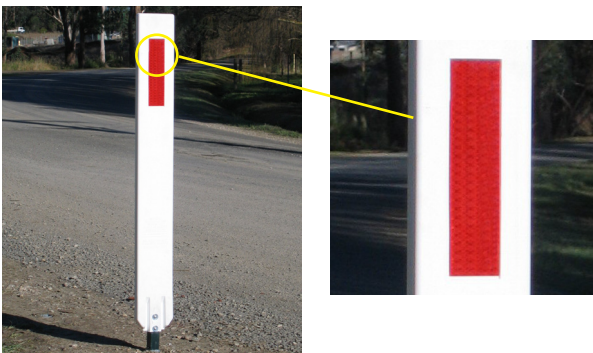
1. The steel ground socket had a "Face Traffic" sticker on one side. Ensure that sticker is placed in the direction of on coming traffic.



2. Using the Jackhammer and tool or the Manual driver, drive socket into ground until completely submerged, with top of socket at ground level.



3. Ensure that you have post deliniator facing the correct direction.



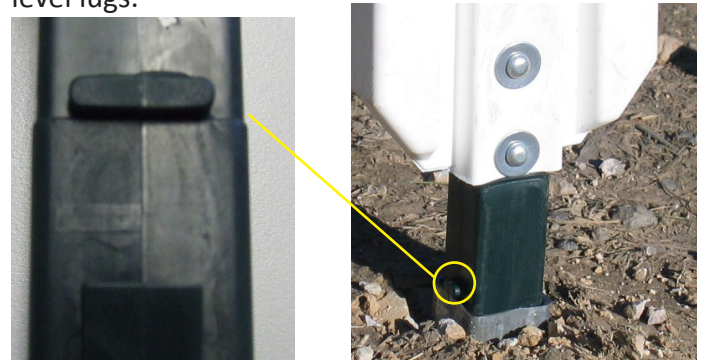
4. Spray with a little RP7 type lubricant to allow it to easily slip into the ground socket.



5. Ensure that the post has locking lug facing the edge of the road.



6. Insert the post and press down till it reaches the level lugs.



7. To complete installation bend post all the way to the ground, both forward and backwards to pre tension the hinge.



Caution: Always wear Personal Protective Equipment (PPE) such as eye protection, work gloves, and steel toe work boots when installing Snaploc Guide Posts.